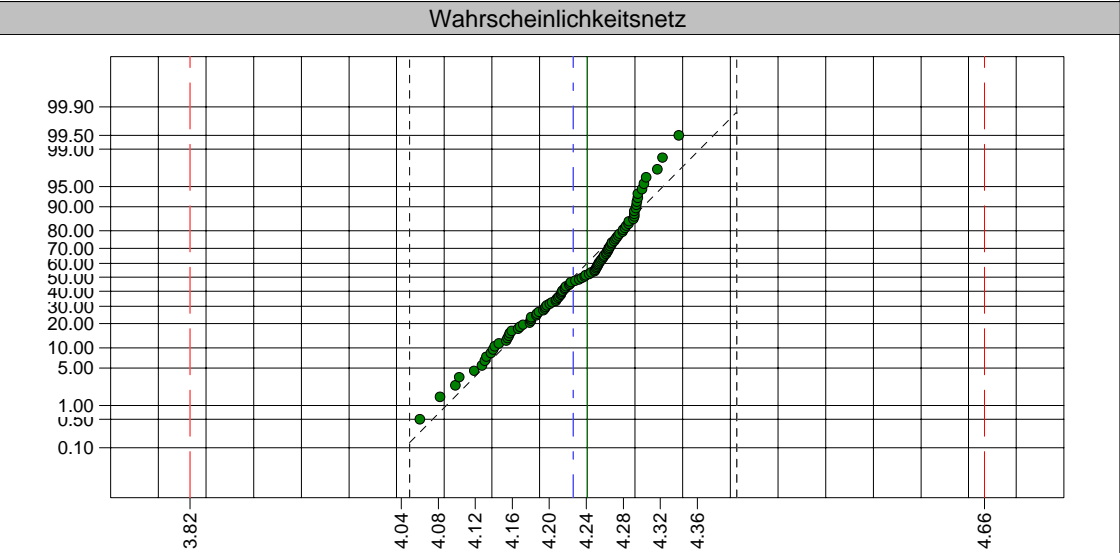
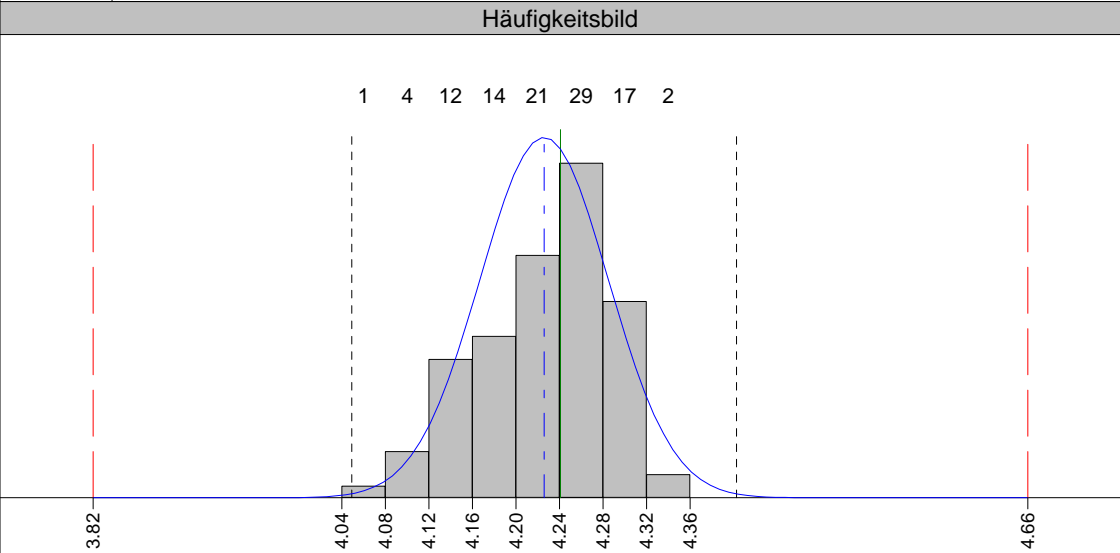
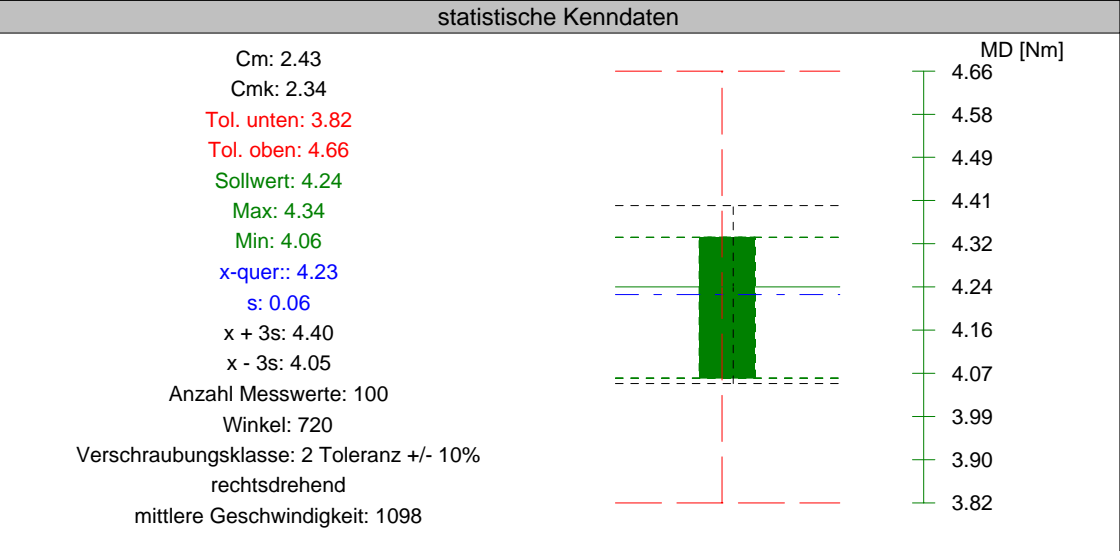
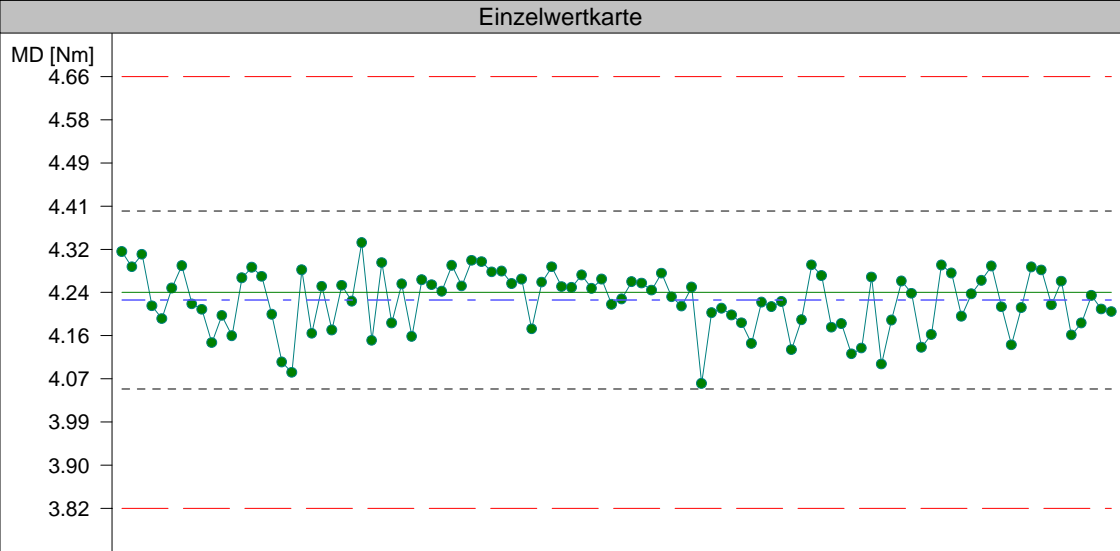




Firma

QST



Einzelwerte:	1. 4.32	6. 4.25	11. 4.20	16. 4.20	21. 4.25	26. 4.15	31. 4.26	36. 4.30	41. 4.27	46. 4.25	51. 4.23	56. 4.23	61. 4.21	66. 4.21	71. 4.27	76. 4.27	81. 4.13	86. 4.24	91. 4.21	96. 4.16
	2. 4.29	7. 4.29	12. 4.16	17. 4.10	22. 4.17	27. 4.30	32. 4.25	37. 4.30	42. 4.17	47. 4.27	52. 4.26	57. 4.21	62. 4.20	67. 4.22	72. 4.17	77. 4.10	82. 4.16	87. 4.26	92. 4.29	97. 4.18
	3. 4.31	8. 4.22	13. 4.27	18. 4.08	23. 4.25	28. 4.18	33. 4.24	38. 4.28	43. 4.26	48. 4.25	53. 4.26	58. 4.25	63. 4.18	68. 4.13	73. 4.18	78. 4.19	83. 4.29	88. 4.29	93. 4.28	98. 4.23
	4. 4.21	9. 4.21	14. 4.29	19. 4.28	24. 4.22	29. 4.26	34. 4.29	39. 4.28	44. 4.29	49. 4.27	54. 4.24	59. 4.06	64. 4.14	69. 4.19	74. 4.12	79. 4.26	84. 4.28	89. 4.21	94. 4.22	99. 4.21
	5. 4.19	10. 4.14	15. 4.27	20. 4.16	25. 4.34	30. 4.15	35. 4.25	40. 4.26	45. 4.25	50. 4.22	55. 4.28	60. 4.20	65. 4.22	70. 4.29	75. 4.13	80. 4.24	85. 4.19	90. 4.14	95. 4.26	100. 4.20

68 - P 382 000 003 - 1.20-5.00 Nm - 6.30 -0 607 453 440 -Bosch -Schrauber (allg.)																				
MFU vom 05.08.2003 auf BLM3850 (3860SK.055 -) Zelle/Kanal 1																				
Einheit: MD [Nm]			Anzahl Messwerte: 100			Mittelwert (x-quer): 4.23			Standardabweichung: 0.06			Cm: 2.43			Cmk: 2.34			i. O.		
Normalverteilung			Toleranz			Sollwert			Mittelwert (x-quer):			6s (x ± 3 s)								

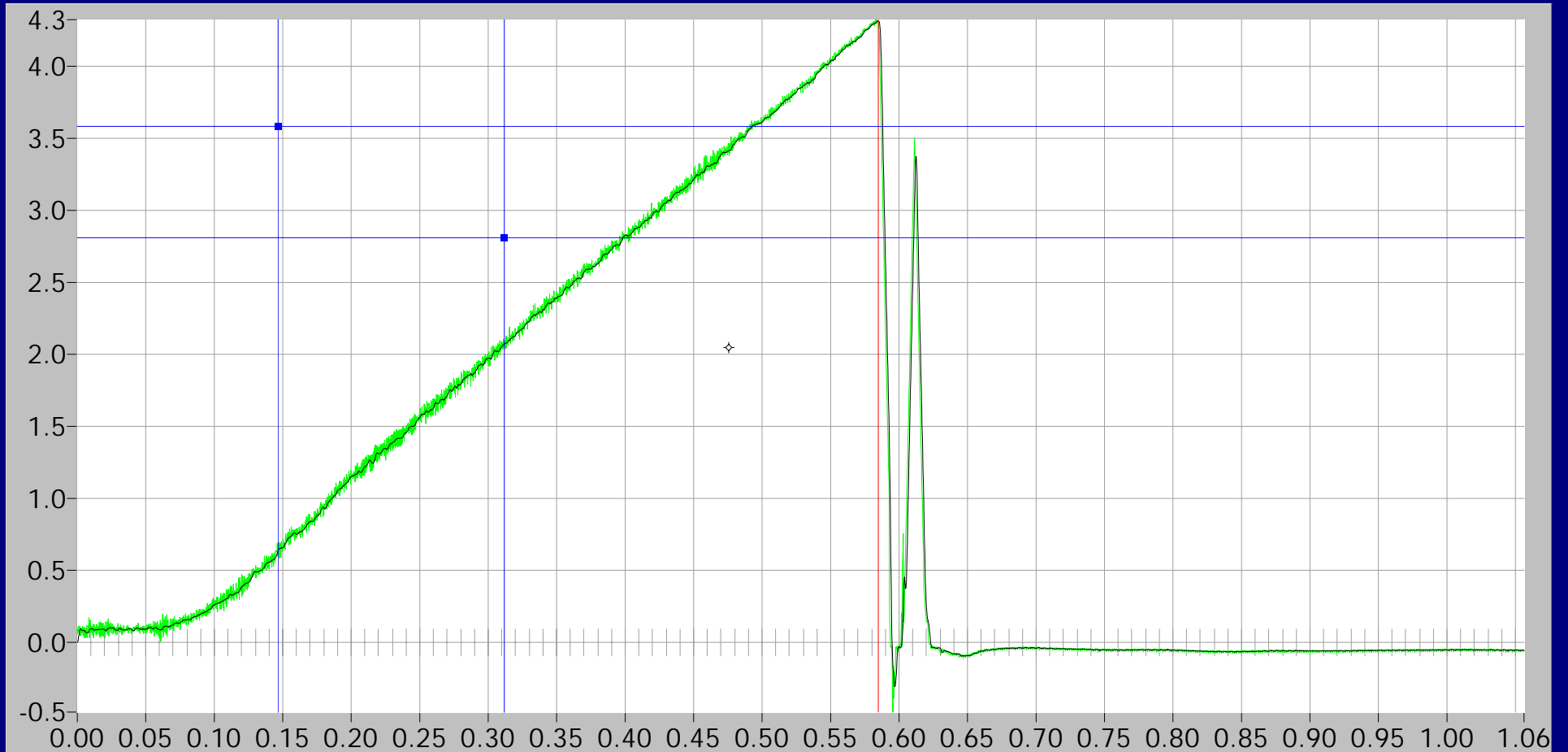
Kurvengrafik

Drehm.

4.31

Freq.

4000



Grenzfreq. 300 Hz

sec: 0.476, Nm: 2.05

Zoom

Restore

Laden

Speichern

Filter

Drucken

Ende

Kurvengrafik

Drehm.

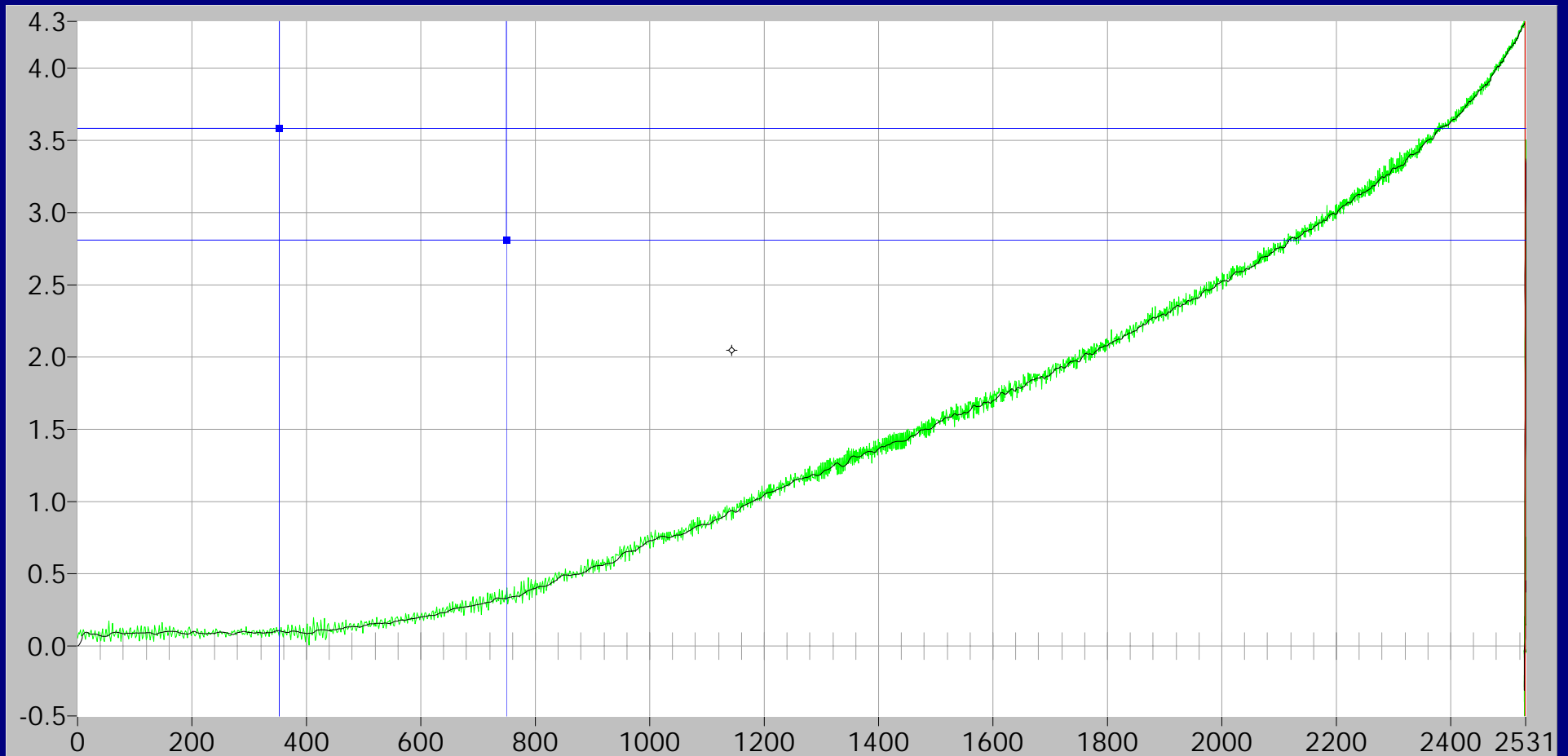
4.31

Winkel

694

Freq.

4000



Grenzfreq. 300 Hz

°: 1143.334, Nm: 2.05

Drehm.-Zeit



Drehm.-Winkel

Zoom

Restore

Laden

Speichern

Filter

Drucken

Ende