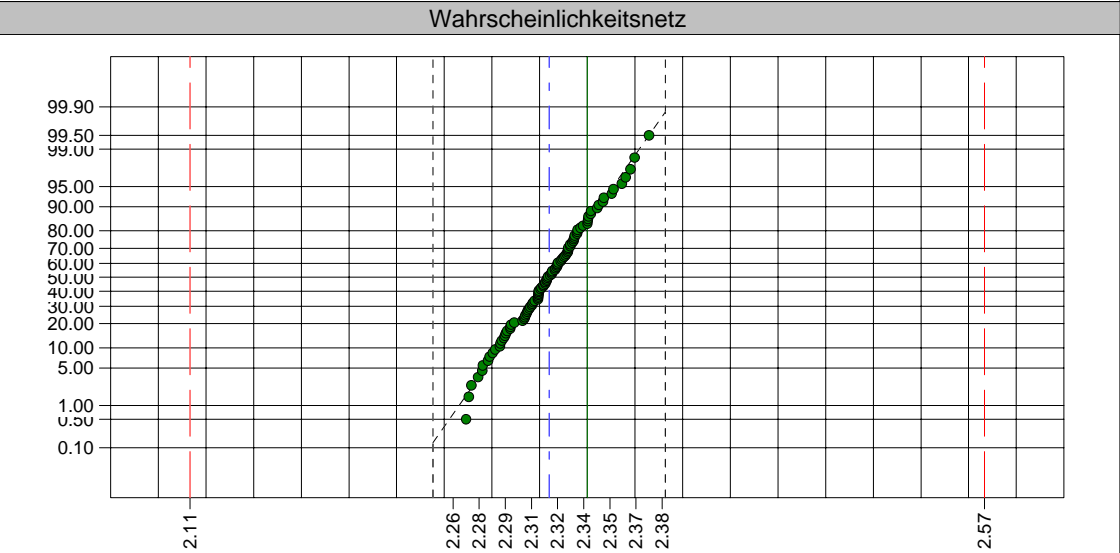
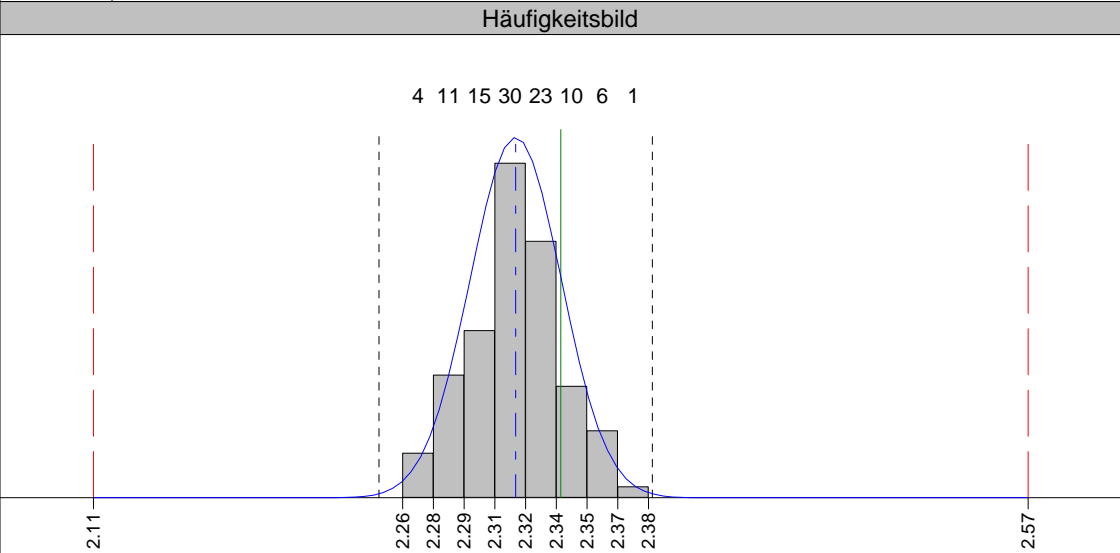
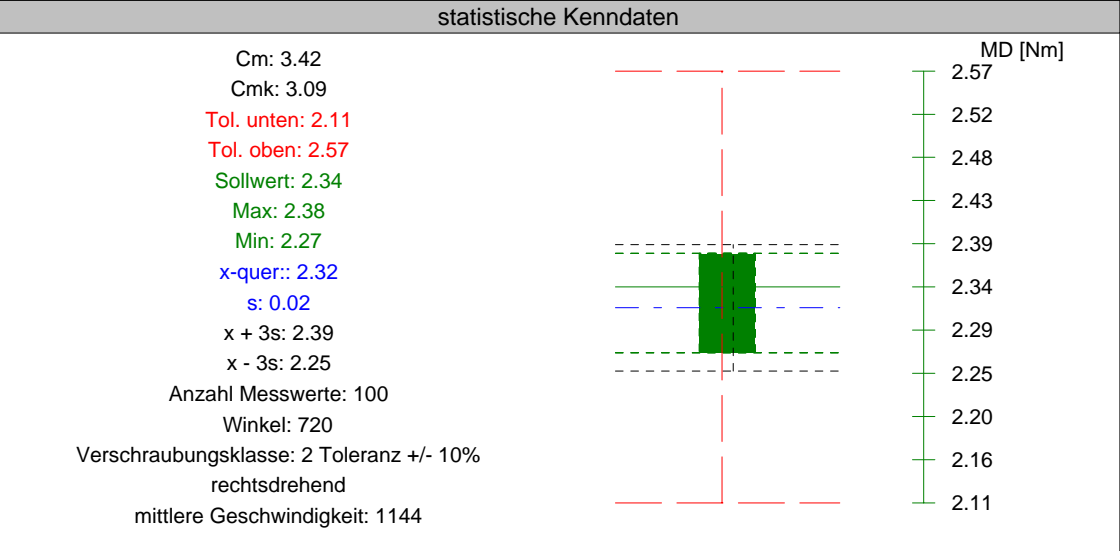
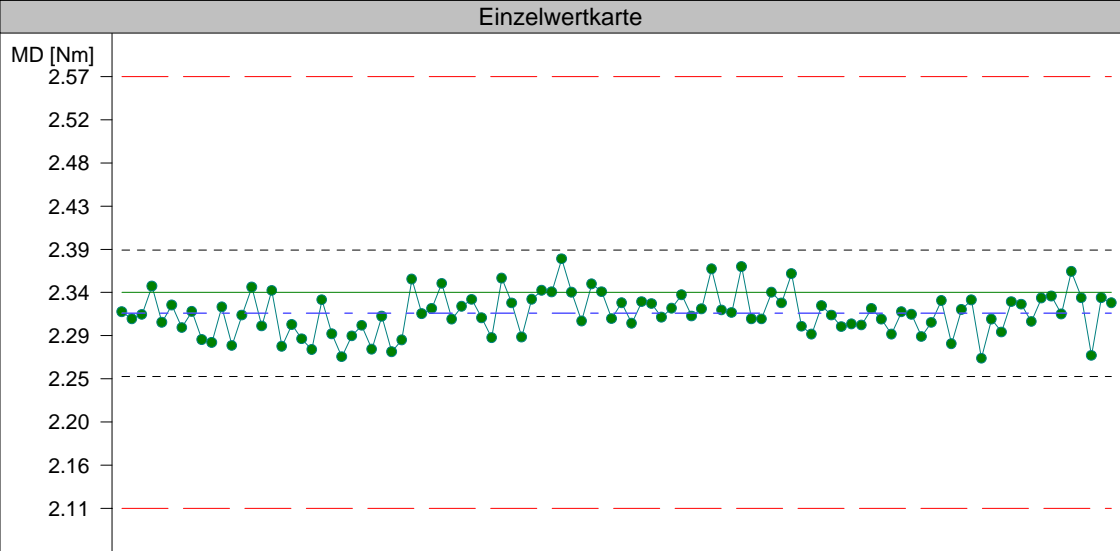




Firma

QST



Einzelwerte:	1. 2.32	6. 2.33	11. 2.32	16. 2.34	21. 2.33	26. 2.28	31. 2.32	36. 2.33	41. 2.29	46. 2.34	51. 2.33	56. 2.32	61. 2.32	66. 2.34	71. 2.33	76. 2.32	81. 2.29	86. 2.33	91. 2.33	96. 2.36
	2. 2.31	7. 2.30	12. 2.28	17. 2.28	22. 2.30	27. 2.31	32. 2.32	37. 2.31	42. 2.33	47. 2.31	52. 2.31	57. 2.34	62. 2.32	67. 2.33	72. 2.32	77. 2.31	82. 2.31	87. 2.27	92. 2.31	97. 2.33
	3. 2.32	8. 2.32	13. 2.32	18. 2.31	23. 2.27	28. 2.28	33. 2.35	38. 2.29	43. 2.34	48. 2.35	53. 2.33	58. 2.31	63. 2.37	68. 2.36	73. 2.30	78. 2.30	83. 2.33	88. 2.31	93. 2.33	98. 2.27
	4. 2.35	9. 2.29	14. 2.35	19. 2.29	24. 2.29	29. 2.29	34. 2.31	39. 2.36	44. 2.34	49. 2.34	54. 2.33	59. 2.32	64. 2.31	69. 2.30	74. 2.31	79. 2.32	84. 2.29	89. 2.30	94. 2.34	99. 2.33
	5. 2.31	10. 2.29	15. 2.30	20. 2.28	25. 2.30	30. 2.35	35. 2.33	40. 2.33	45. 2.38	50. 2.31	55. 2.31	60. 2.37	65. 2.31	70. 2.30	75. 2.31	80. 2.32	85. 2.32	90. 2.33	95. 2.32	100. 2.33

67 - P 382 000 013 - 1.20-5.00 Nm - 6.30 -0 607 453 440 -Bosch -Schrauber (allg.)																				
MFU vom 05.08.2003 auf BLM3850 (3860SK.055 -) Zelle/Kanal 1																				
Einheit: MD [Nm]																				
Normalverteilung																				
Anzahl Messwerte: 100																				
Toleranz																				
Mittelwert (x-quer): 2.32																				
Standardabweichung: 0.02																				
Cm: 3.42																				
Cmk: 3.09																				
i. O.																				
6s (x ± 3 s)																				

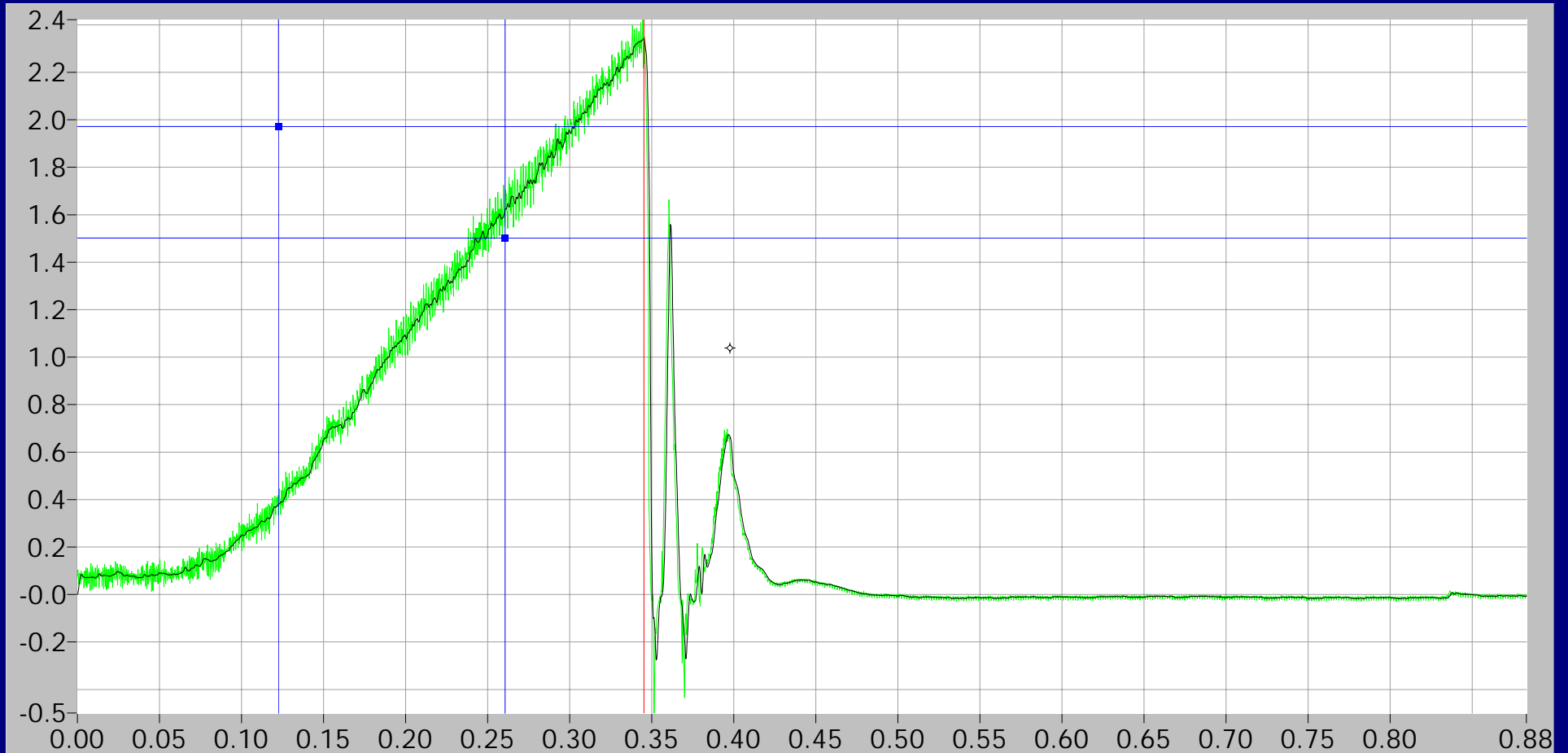
Kurvengrafik

Drehm.

2.34

Freq.

4000



Grenzfreq. 300 Hz

sec: 0.398, Nm: 1.04

Zoom

Restore

Laden

Speichern

Filter

Drucken

Ende

Kurvengrafik

Drehm.

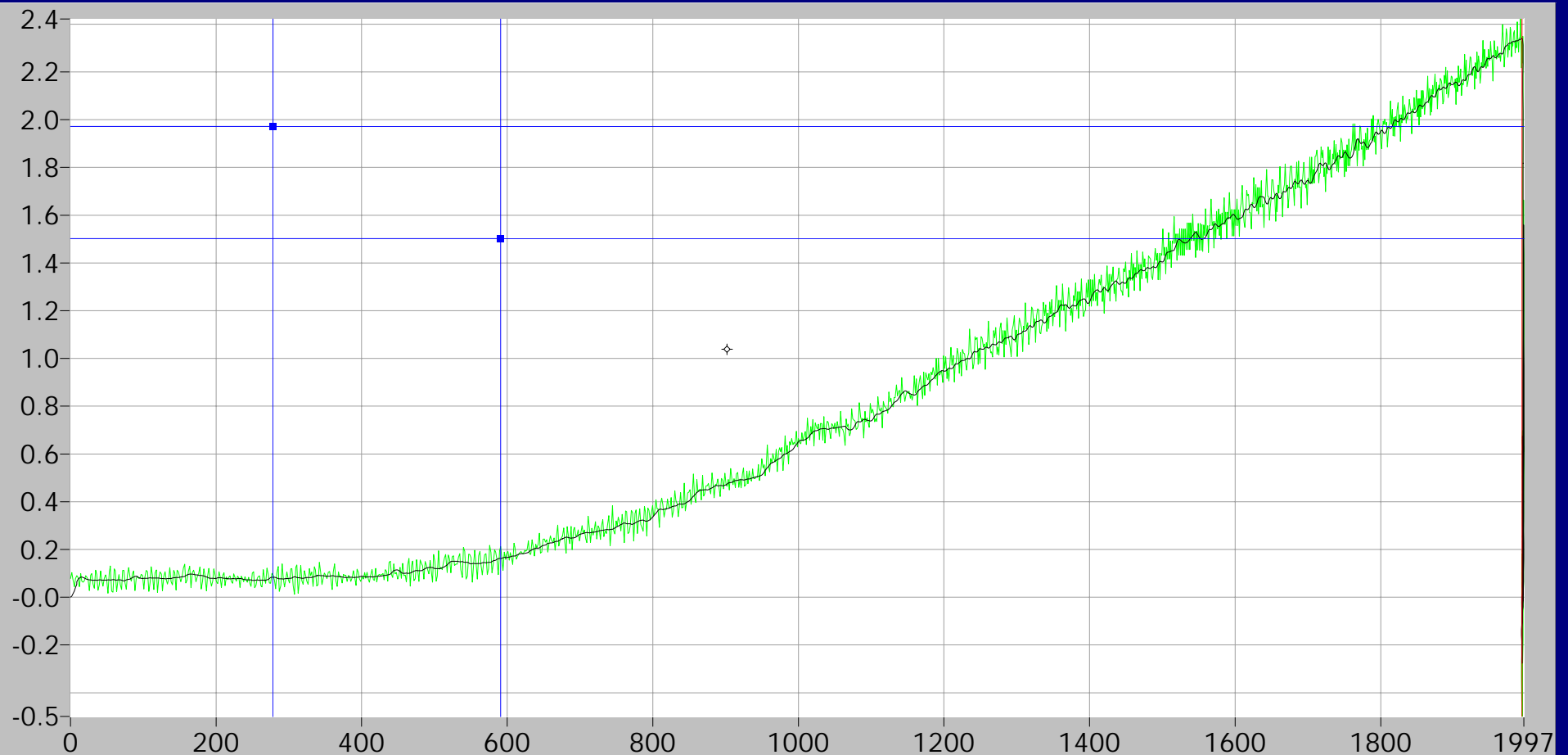
2.34

Winkel

650

Freq.

4000



Grenzfreq. 300 Hz

°: 901.984, Nm: 1.04

Drehm.-Zeit



Drehm.-Winkel

Zoom

Restore

Laden

Speichern

Filter

Drucken

Ende