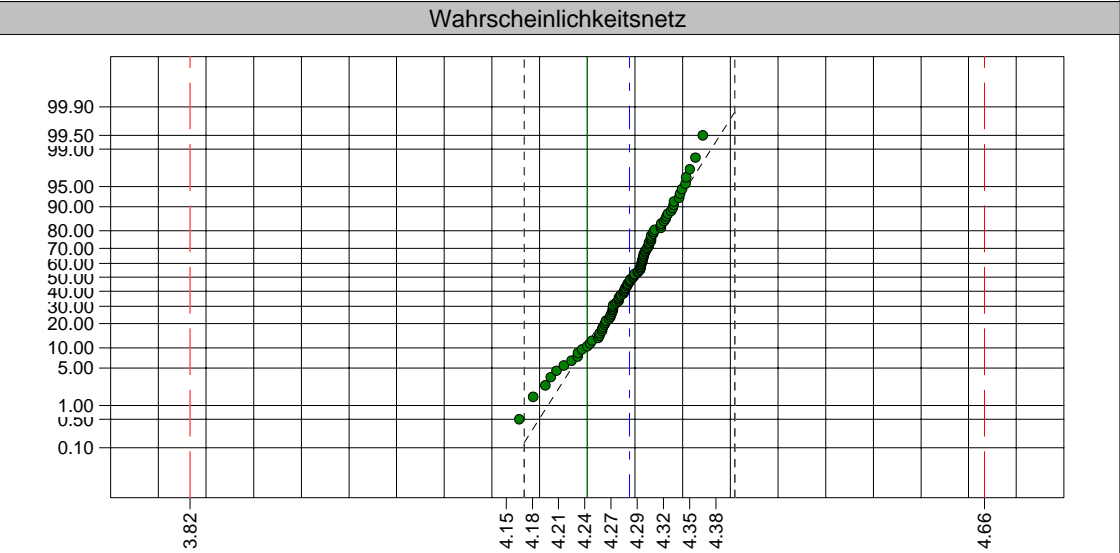
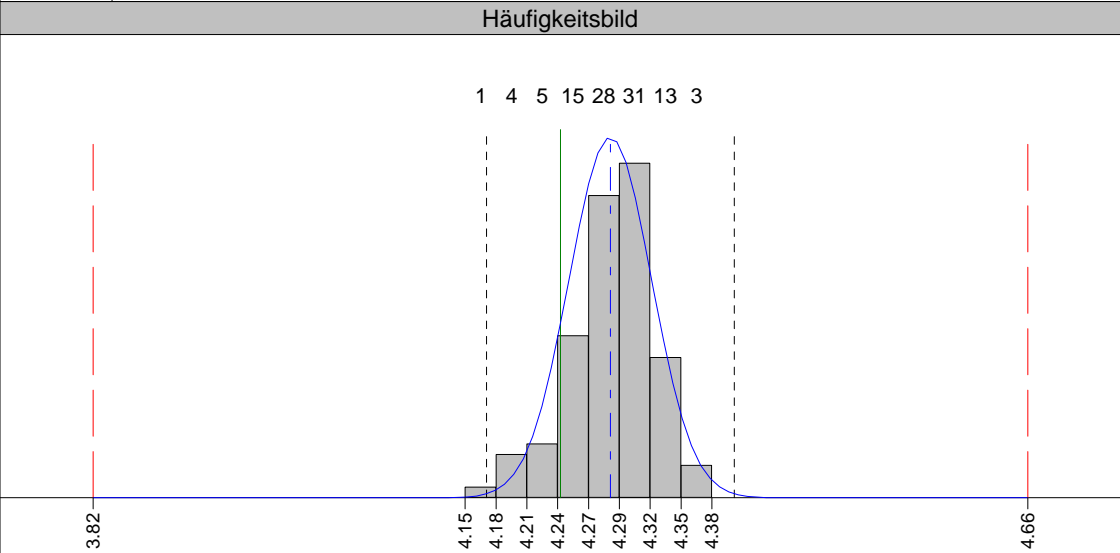
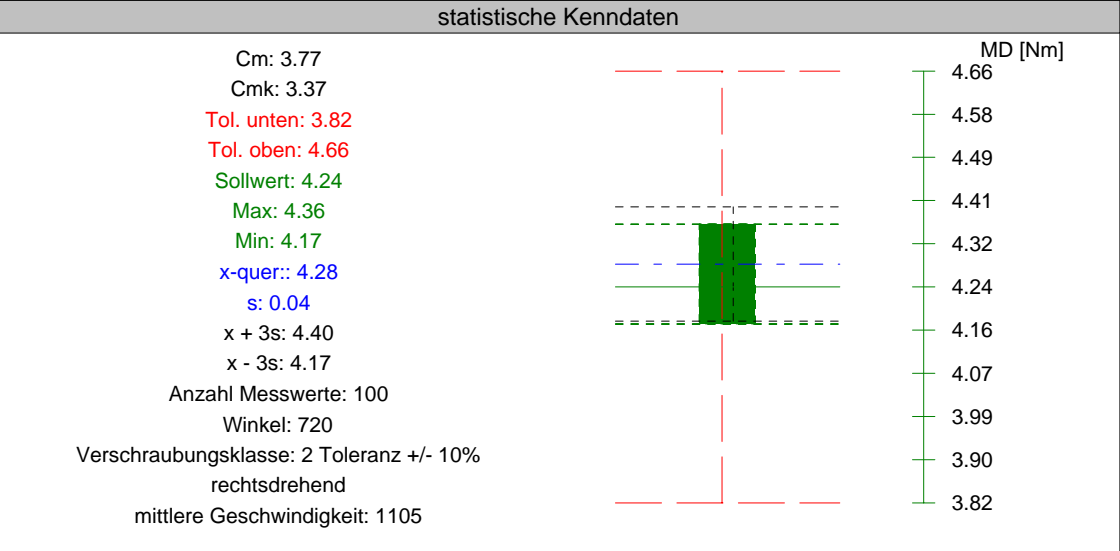
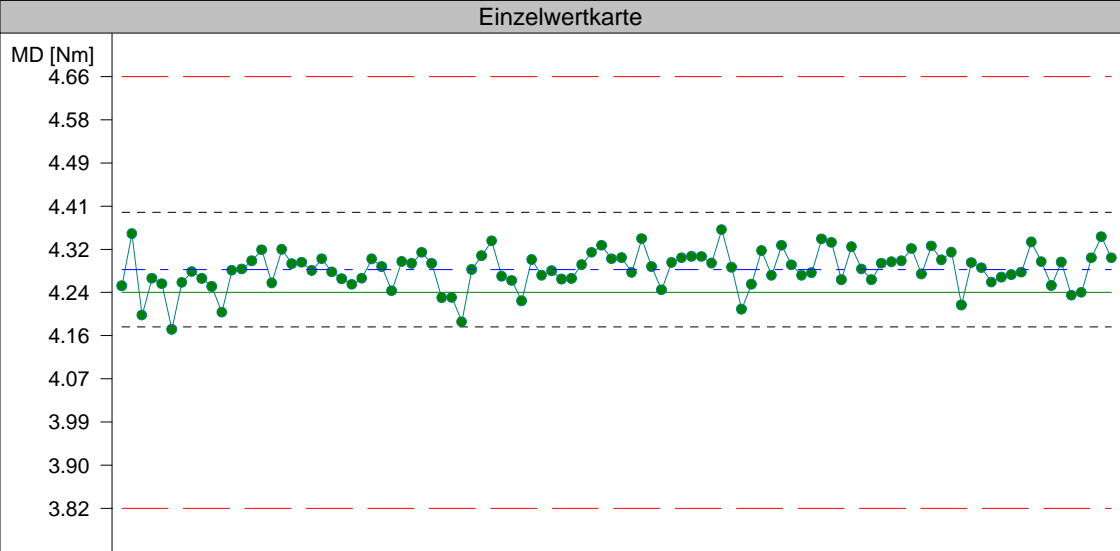




Firma
MtB/EMG3

Sanwald
249



Einzelwerte:	1. 4.25	6. 4.17	11. 4.20	16. 4.26	21. 4.31	26. 4.31	31. 4.32	36. 4.28	41. 4.22	46. 4.27	51. 4.31	56. 4.30	61. 4.36	66. 4.27	71. 4.34	76. 4.26	81. 4.28	86. 4.30	91. 4.28	96. 4.23
	2. 4.35	7. 4.26	12. 4.28	17. 4.32	22. 4.28	27. 4.29	32. 4.30	37. 4.31	42. 4.30	47. 4.29	52. 4.28	57. 4.31	62. 4.29	67. 4.33	72. 4.34	77. 4.30	82. 4.33	87. 4.29	92. 4.34	97. 4.24
	3. 4.20	8. 4.28	13. 4.29	18. 4.30	23. 4.27	28. 4.24	33. 4.23	38. 4.34	43. 4.27	48. 4.32	53. 4.34	58. 4.31	63. 4.21	68. 4.29	73. 4.26	78. 4.30	83. 4.30	88. 4.26	93. 4.30	98. 4.31
	4. 4.27	9. 4.27	14. 4.30	19. 4.30	24. 4.26	29. 4.30	34. 4.23	39. 4.27	44. 4.28	49. 4.33	54. 4.29	59. 4.31	64. 4.26	69. 4.27	74. 4.33	79. 4.30	84. 4.32	89. 4.27	94. 4.25	99. 4.35
	5. 4.26	10. 4.25	15. 4.32	20. 4.28	25. 4.27	30. 4.30	35. 4.18	40. 4.26	45. 4.27	50. 4.31	55. 4.24	60. 4.30	65. 4.32	70. 4.28	75. 4.29	80. 4.33	85. 4.22	90. 4.27	95. 4.30	100. 4.31

69 - P 382 000 015 - 1.20-5.00 Nm - 6.30 -0 607 453 440 -Bosch -Schrauber (allg.)																				
MFU vom 06.08.2003 auf BLM3850 (3860SK.055 -) Zelle/Kanal 1																				
Einheit: MD [Nm]																				
Normalverteilung																				
Anzahl Messwerte: 100																				
Toleranz																				
Mittelwert (x-quer): 4.28																				
Standardabweichung: 0.04																				
Cm: 3.77																				
Cmk: 3.37																				
i. O.																				
6s (x ± 3 s)																				

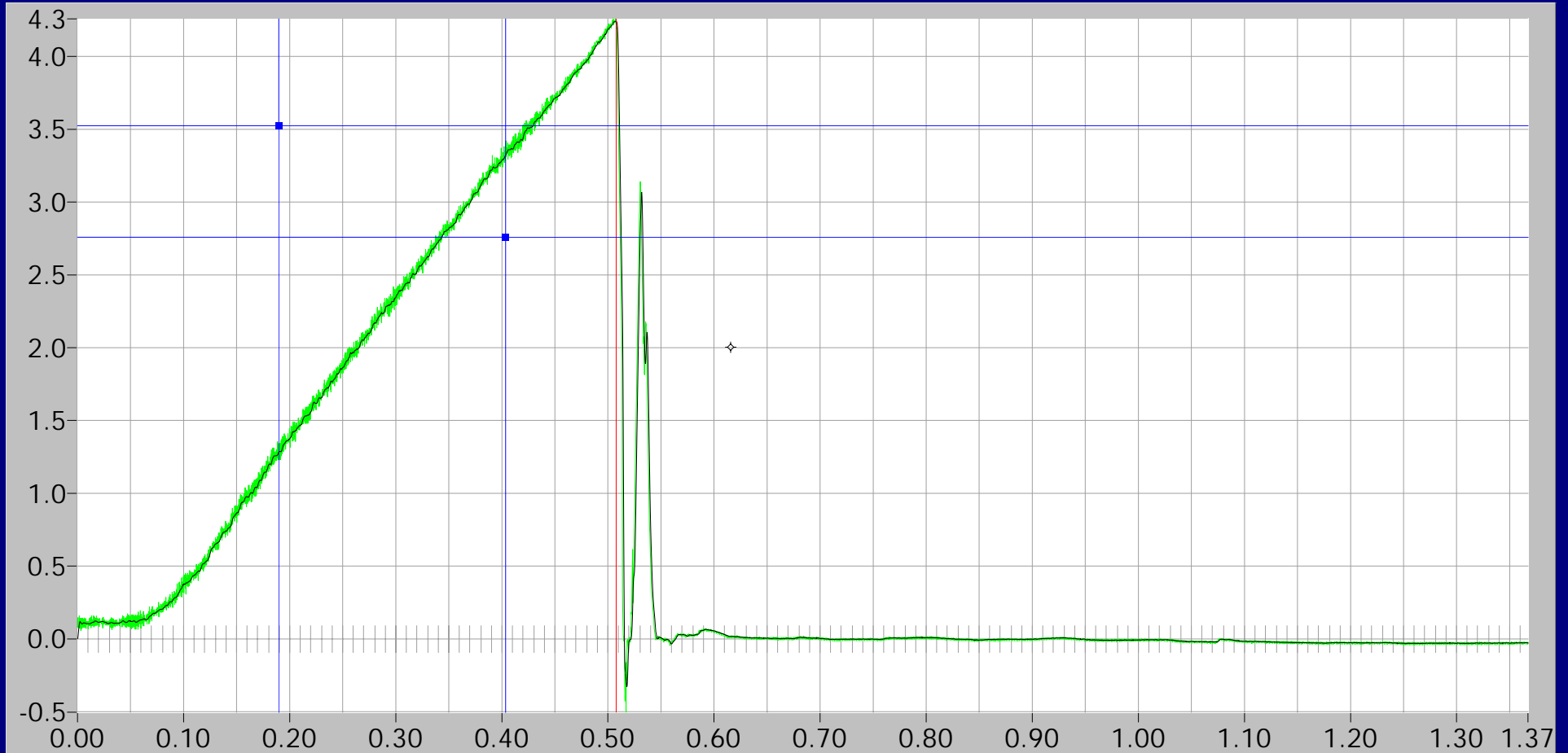
Kurvengrafik

Drehm.

4.24

Freq.

4000



Grenzfreq. 300 Hz

sec: 0.616, Nm: 2.00

Zoom

Restore

Laden

Speichern

Filter

Drucken

Ende

Kurvengrafik

Drehm.

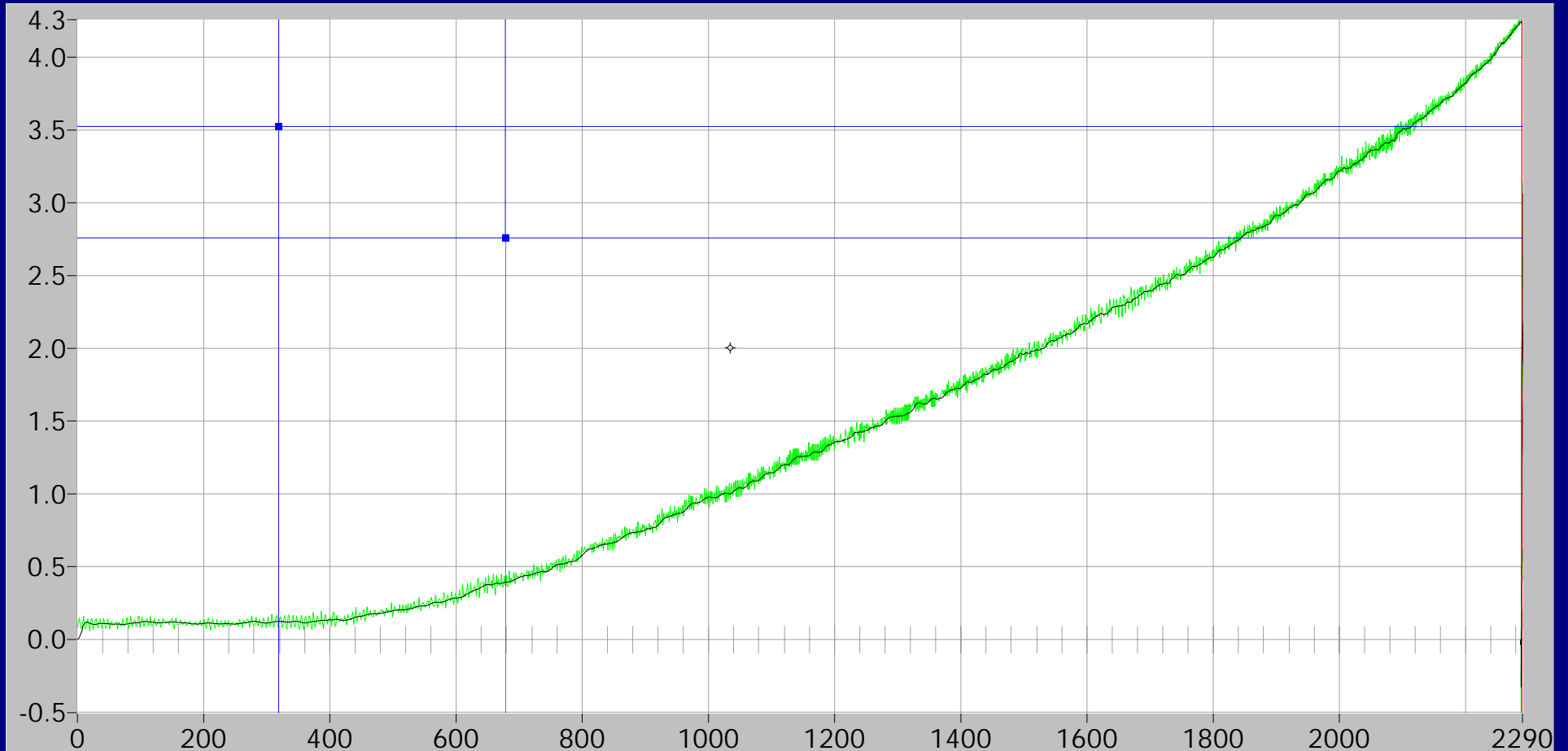
4.24

Winkel

707

Freq.

4000



Grenzfreq. 300 Hz

°: 1034.574, Nm: 2.00

Drehm.-Zeit



Drehm.-Winkel

Zoom

Restore

Laden

Speichern

Filter

Drucken

Ende