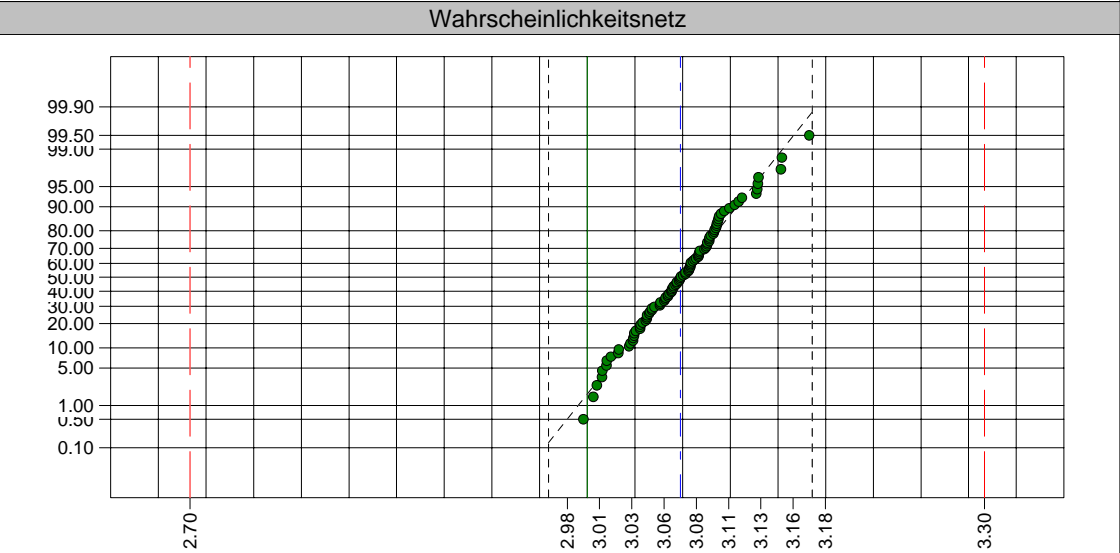
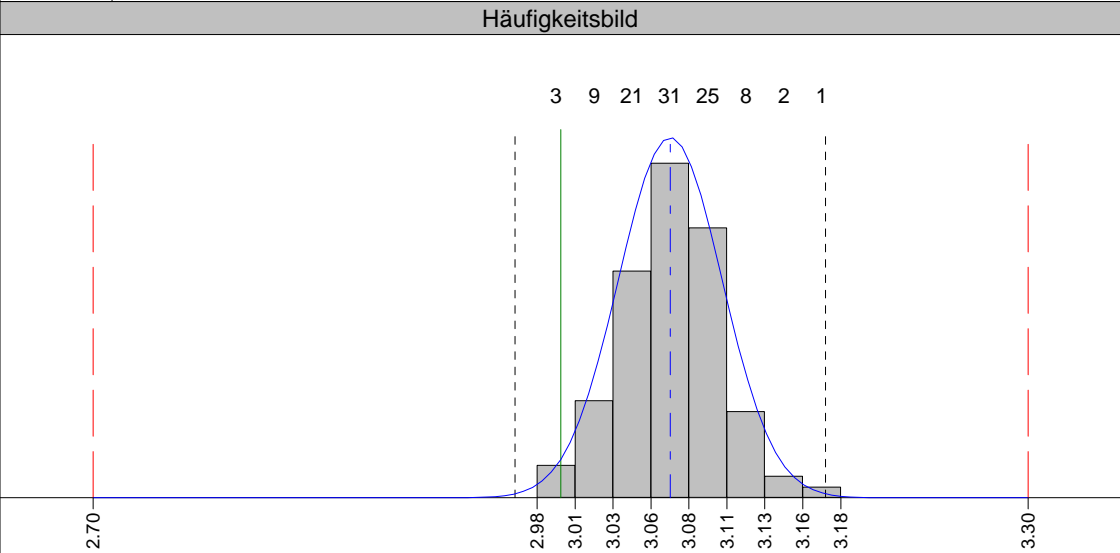
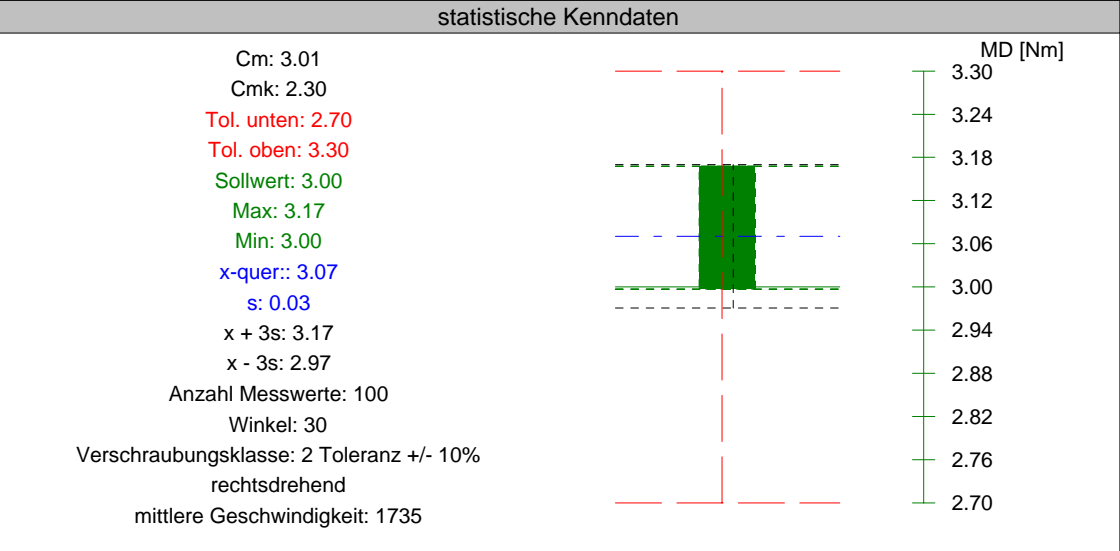
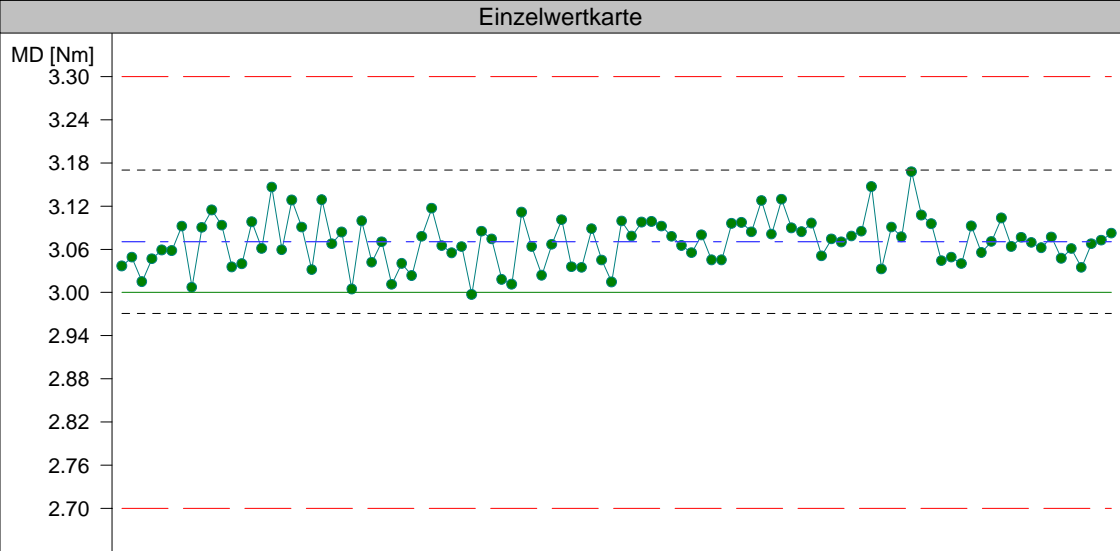




Firma

QST



Einzelwerte:	1. 3.04	6. 3.06	11. 3.09	16. 3.15	21. 3.13	26. 3.04	31. 3.08	36. 3.00	41. 3.11	46. 3.04	51. 3.10	56. 3.08	61. 3.05	66. 3.08	71. 3.05	76. 3.15	81. 3.11	86. 3.09	91. 3.08	96. 3.06
	2. 3.05	7. 3.09	12. 3.04	17. 3.06	22. 3.07	27. 3.07	32. 3.12	37. 3.08	42. 3.06	47. 3.03	52. 3.08	57. 3.07	62. 3.10	67. 3.13	72. 3.07	77. 3.03	82. 3.10	87. 3.06	92. 3.07	97. 3.03
	3. 3.01	8. 3.01	13. 3.04	18. 3.13	23. 3.08	28. 3.01	33. 3.07	38. 3.07	43. 3.02	48. 3.09	53. 3.10	58. 3.06	63. 3.10	68. 3.09	73. 3.07	78. 3.09	83. 3.04	88. 3.07	93. 3.06	98. 3.07
	4. 3.05	9. 3.09	14. 3.10	19. 3.09	24. 3.00	29. 3.04	34. 3.05	39. 3.02	44. 3.07	49. 3.04	54. 3.10	59. 3.08	64. 3.08	69. 3.08	74. 3.08	79. 3.08	84. 3.05	89. 3.10	94. 3.08	99. 3.07
	5. 3.06	10. 3.11	15. 3.06	20. 3.03	25. 3.10	30. 3.02	35. 3.06	40. 3.01	45. 3.10	50. 3.01	55. 3.09	60. 3.05	65. 3.13	70. 3.10	75. 3.08	80. 3.17	85. 3.04	90. 3.06	95. 3.05	100. 3.08

64 - P 382 000 020 - 0.00-4.50 Nm - 6.30 -0 607 453 443 -Bosch -Schrauber (allg.)
MFU vom 04.08.2003 auf BLM3850 (3860SK.055 -) Zelle/Kanal 1

Einheit: MD [Nm] Anzahl Messwerte: 100 Mittelwert (x-quer): 3.07 Standardabweichung: 0.03 Cm: 3.01 Cmk: 2.30 i. O.
Normalverteilung Toleranz Sollwert Mittelwert (x-quer): 6s (x ± 3 s)

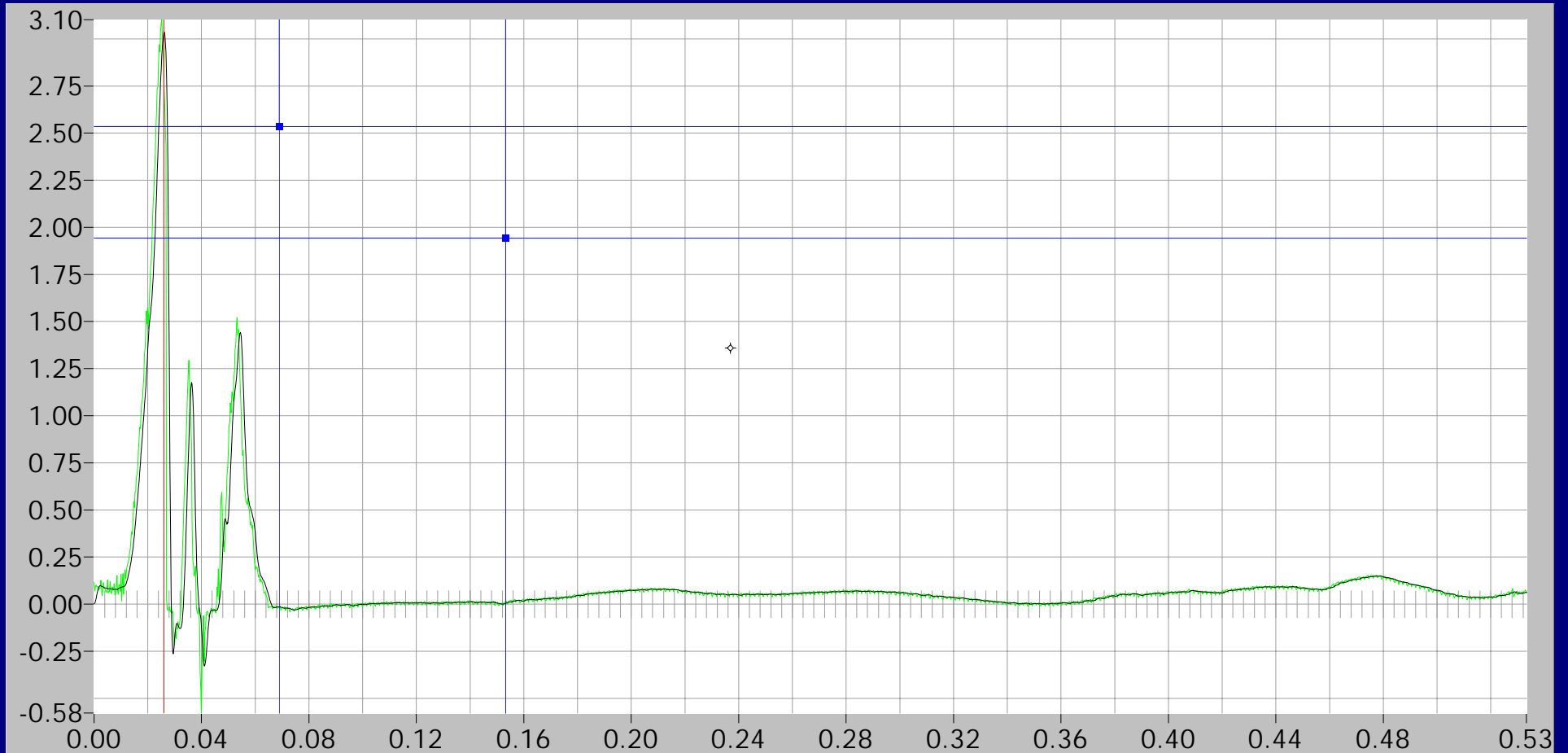
Kurvengrafik

Drehm.

3.04

Freq.

4000



Grenzfreq. 300 Hz

sec: 0.237, Nm: 1.36

Zoom

Restore

Laden

Speichern

Filter

Drucken

Ende

Kurvengrafik

Drehm.

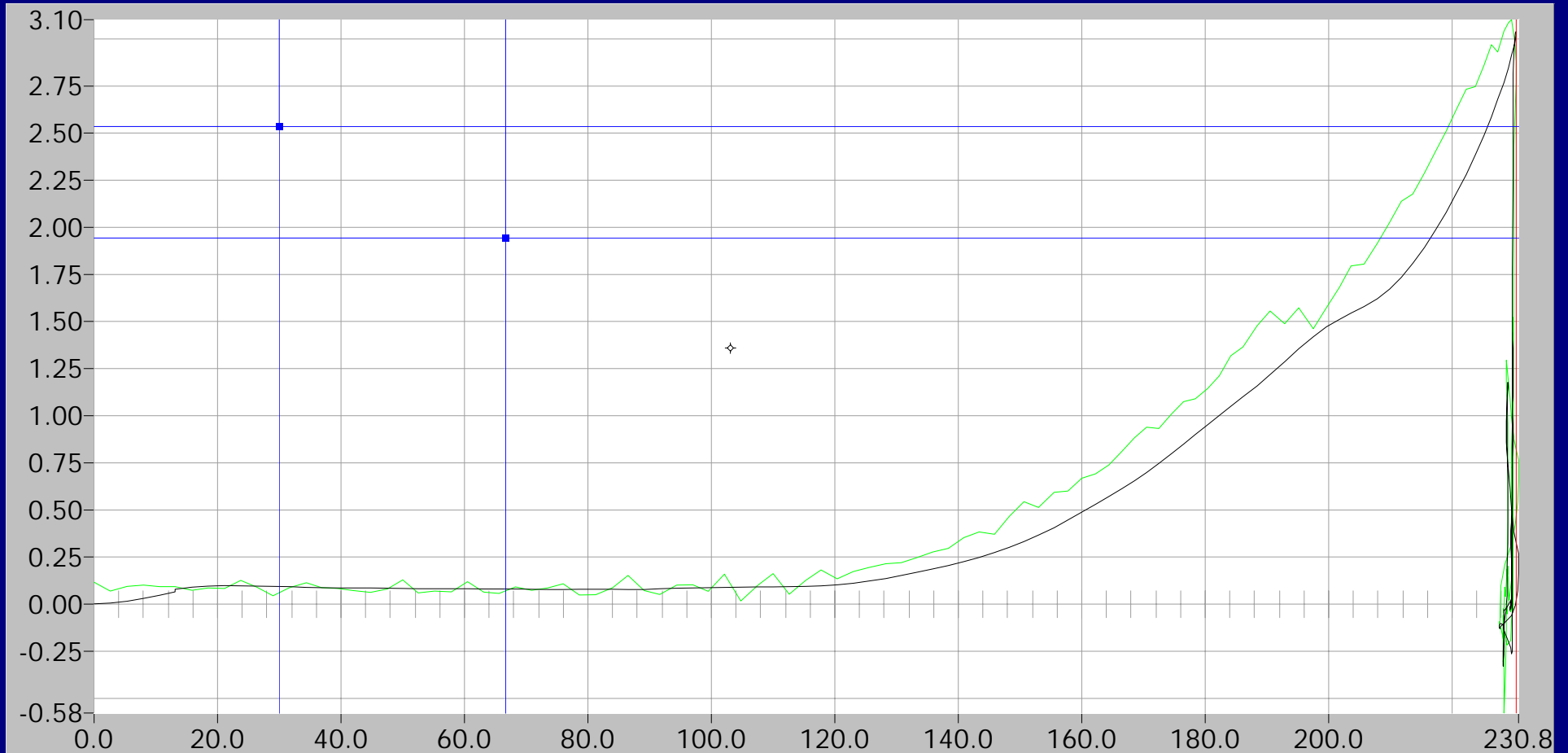
3.04

Winkel

26

Freq.

4000



Grenzfreq. 300 Hz

°: 103.068, Nm: 1.36

Drehm.-Zeit



Drehm.-Winkel

Zoom

Restore

Laden

Speichern

Filter

Drucken

Ende