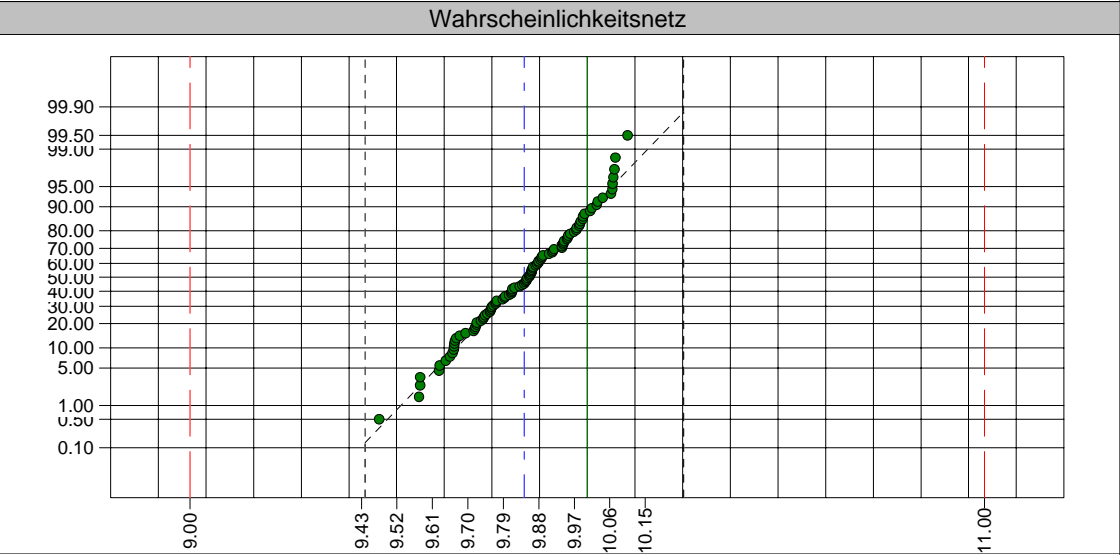
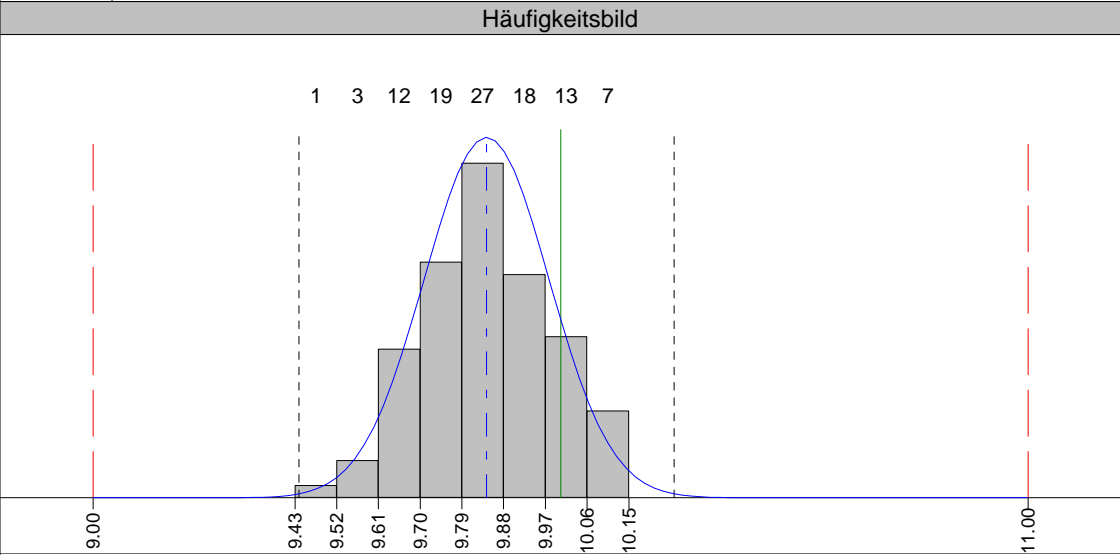
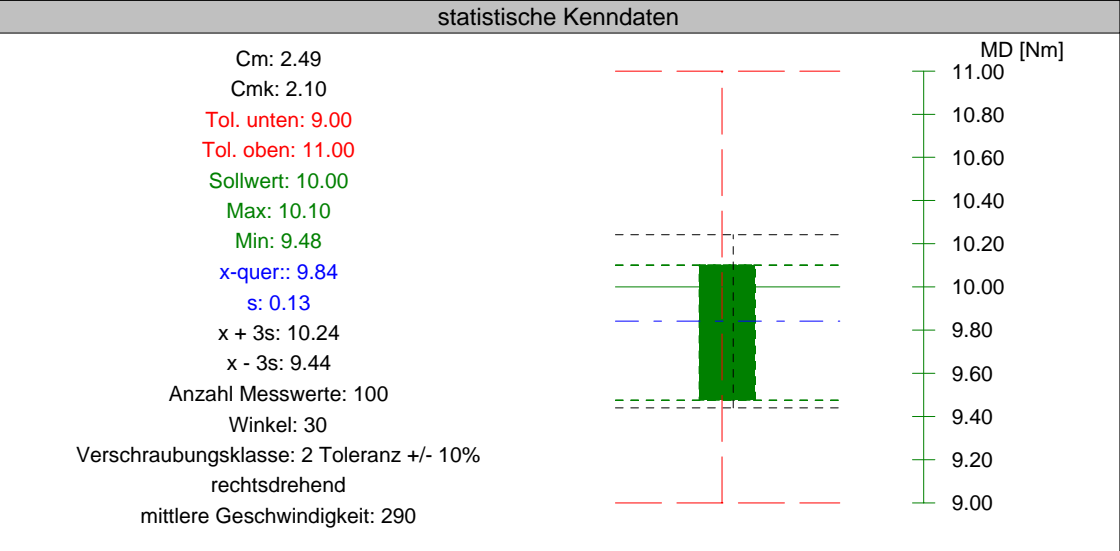
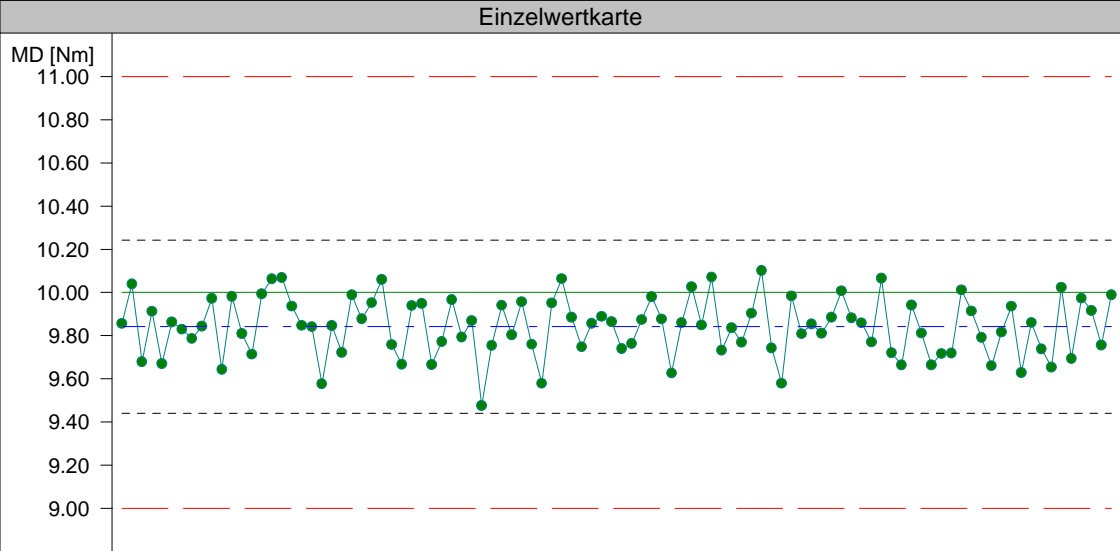


Firma

QST



| | | | | | | | | | | | | | | | | | | | | |
|---------|----------|----------|----------|-----------|----------|-----------|----------|----------|-----------|----------|----------|-----------|-----------|----------|-----------|-----------|-----------|----------|-----------|-----------|
| Einzel- | 1. 9.86 | 6. 9.86 | 11. 9.64 | 16. 10.06 | 21. 9.58 | 26. 9.95 | 31. 9.95 | 36. 9.87 | 41. 9.96 | 46. 9.89 | 51. 9.74 | 56. 9.63 | 61. 9.73 | 66. 9.74 | 71. 9.81 | 76. 9.77 | 81. 9.81 | 86. 9.91 | 91. 9.63 | 96. 9.69 |
| werte: | 2. 10.04 | 7. 9.83 | 12. 9.98 | 17. 10.07 | 22. 9.85 | 27. 10.06 | 32. 9.67 | 37. 9.48 | 42. 9.76 | 47. 9.75 | 52. 9.76 | 57. 9.86 | 62. 9.84 | 67. 9.58 | 72. 9.89 | 77. 10.07 | 82. 9.66 | 87. 9.79 | 92. 9.86 | 97. 9.97 |
| | 3. 9.68 | 8. 9.79 | 13. 9.81 | 18. 9.94 | 23. 9.72 | 28. 9.76 | 33. 9.77 | 38. 9.75 | 43. 9.58 | 48. 9.86 | 53. 9.87 | 58. 10.03 | 63. 9.77 | 68. 9.98 | 73. 10.01 | 78. 9.72 | 83. 9.72 | 88. 9.66 | 93. 9.74 | 98. 9.92 |
| | 4. 9.91 | 9. 9.84 | 14. 9.71 | 19. 9.85 | 24. 9.99 | 29. 9.67 | 34. 9.97 | 39. 9.94 | 44. 9.95 | 49. 9.89 | 54. 9.98 | 59. 9.85 | 64. 9.90 | 69. 9.81 | 74. 9.88 | 79. 9.66 | 84. 9.72 | 89. 9.82 | 94. 9.65 | 99. 9.76 |
| | 5. 9.67 | 10. 9.97 | 15. 9.99 | 20. 9.84 | 25. 9.88 | 30. 9.94 | 35. 9.79 | 40. 9.80 | 45. 10.06 | 50. 9.86 | 55. 9.88 | 60. 10.07 | 65. 10.10 | 70. 9.85 | 75. 9.86 | 80. 9.94 | 85. 10.01 | 90. 9.94 | 95. 10.02 | 100. 9.99 |

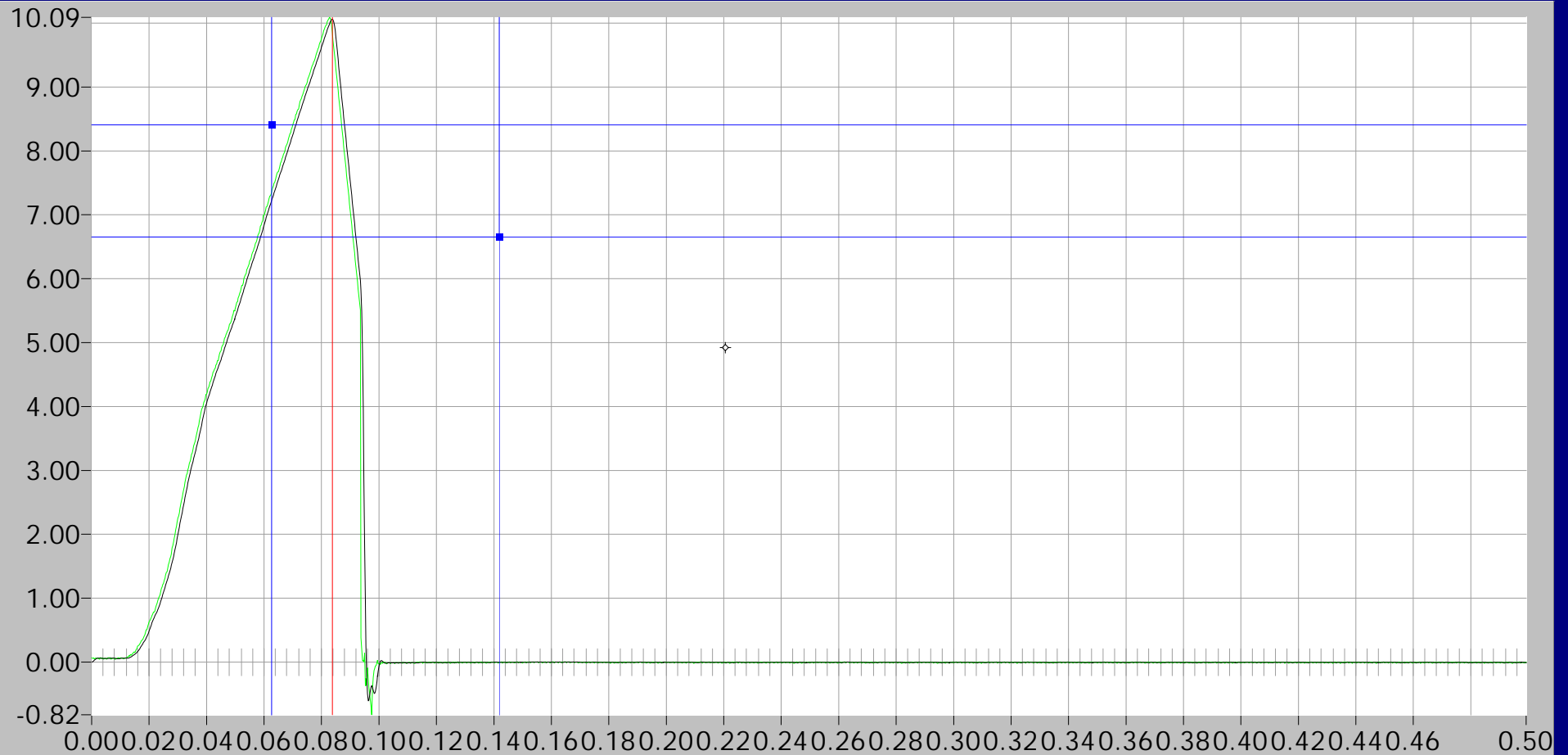
Kurvengrafik

Drehm.

10.06

Freq.

4000



Grenzfreq. 300 Hz

sec: 0.221, Nm: 4.92

Zoom

Restore

Laden

Speichern

Filter

Drucken

Ende

Kurvengrafik

Drehm.

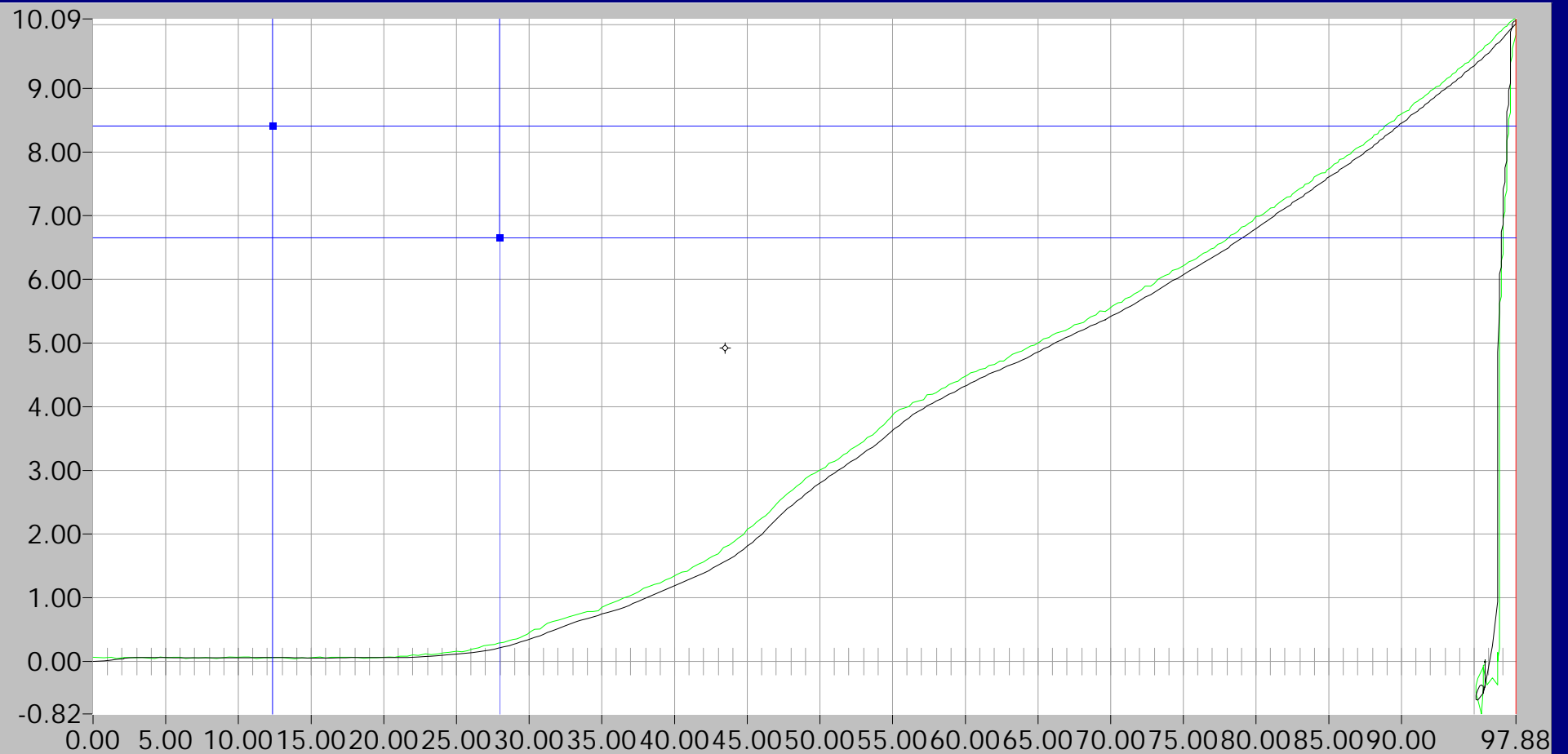
10.06

Winkel

31

Freq.

4000



Grenzfreq. 300 Hz

°: 43.476, Nm: 4.92

Drehm.-Zeit



Drehm.-Winkel

Zoom

Restore

Laden

Speichern

Filter

Drucken

Ende